

THE HOME BUILDERS ASSOCIATION OF JACKSON'S

DEVELOPMENT GUIDE

2023 2024

METRO JACKSON AREA

WESTLAKE

Tranquility At Your Doorstep

Matt Jensen • 601-540-1123 | Scott Gideon • 601-750-5111

westlakems.com



Consultants, LLC

1888 Main Street, C-190
Madison, MS 39110

601-383-1050

abtsconsultants.com

ABTS Consultants, LLC can provide soil borings, structural foundation inspections, soil compaction testing, geoforensic investigations, and geotechnical engineering on residential projects. ABTS has over 25 years experience in the field of geoscience and construction materials testing. We are licensed geotechnical engineers in Mississippi, Louisiana, Alabama, and Texas. At ABTS we provide "Information to Build On".



EXPEDITION POINT

expeditionpoint.com



**Playground | Amphitheater | Hiking & Biking | Swimming
Horseback Trails | Sporting Clay | Ballfields
Boating | Fishing | Sailing**

Madison County Schools

Located between Natchez Trace Parkway, Hwy 43 & Reservoir



JESSIE HALEY
601-559-5354



HALEY
PROPERTIES
601-910-9010



ROBIN TORRENCE
601-720-3436



Responsible energy for today and generations to come.

Choosing a home with natural gas is the smart choice for your family and the environment. Whether it's heating your water, warming your home or cooking for family and friends, natural gas is efficient and affordable energy that lowers your home's environmental footprint.

LEARN MORE ABOUT HOW NATURAL GAS IS
A PART OF OUR CLEAN ENERGY FUTURE AT
[ATMOSENERGY.COM/CLEANENERGY](https://atmosenergy.com/cleanenergy)

ATMOS
energy®

Your natural gas company



Life's Just Better with Brick



Homes made of Cherokee Brick are built on a foundation of incredible beauty and durability. With hundreds of brick styles to choose from — made in Mississippi at our Jackson plant — we've been an American-owned, southern tradition for five family-owned generations.

Before you build your dreamhome, check out our dream material.

Cherokee Brick

MISSISSIPPI MADE

2050 Forest Avenue | Jackson, MS 39213 | 601.981.1410 | cherokeebrick.com

8 MADISON COUNTY MAP & DEVELOPMENTS

2023
2024

DEVELOPMENT GUIDE

- Autumn Crest
- Bellemeade of Caroline
- Canyon Ridge
- Carlton Parke II
- Charlton Place
- Expedition Point ★
- Fontanelle ★
- Glendale Farms
- Glenwild
- Heron's Bay of Caroline
- Katherine Lake of Caroline
- Pinehurst II of Caroline
- Reunion
- Sawyer's Ridge
- Springwood ★
- Stone Lake
- The Heritage of Jacob's Farm
- The Shores
- The Town of Lost Rabbit
- The Village at Madison ★
- Thornberry
- West Lake ★
- Whittington ★
- Wild Oak of Oakfield
- Woodscape of Oakfield
- Wright's Mill
- Yandell Farms

23 HINDS COUNTY MAP & DEVELOPMENTS

- Horseshoe Bend ★
- Trace Pointe ★
- Windsor Plantation
- Cedars of Byram Estates

28 RANKIN COUNTY MAP & DEVELOPMENTS

- Bristol Crossing
- Fallen Oak
- Jasmine Cove
- Kensington ★
- Indian Creek
- Les Maisons
- Liberte
- Long Leaf
- Northshore Landing
- Patrick Farms
- Silver Ridge
- Stone Bridge
- Tower Ridge
- Vintner's Crossing
- WaterPointe
- Waverly

★ DEVELOPMENT ADVERTISER

* Development information may change over time.
Contact developer for current numbers and/or prices.

Home loans that fit you to a

Shopping for a home can be challenging. That's why Trustmark makes it simple to apply online for pre-qualification, so when you find your dream home, you can move fast. It's good to have one of the South's leading lenders on your side. **Learn more at trustmark.com.**

Trustmark

Member FDIC

**HD LANG
& ASSOCIATES, INC.**

Civil Engineering
& Land Surveying

4099 North State Street
Jackson, MS 39206

601-362-4886

don_mcdonald@bellsouth.net
jhorton23@bellsouth.net

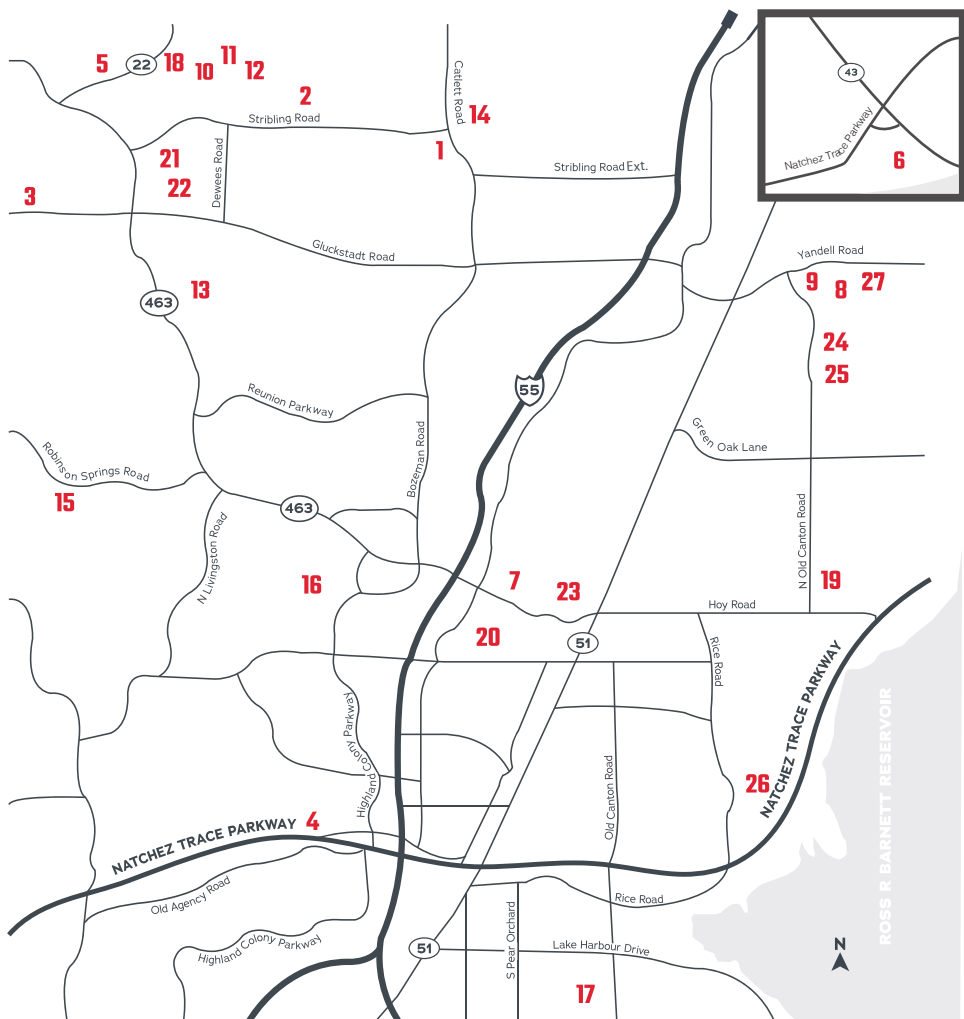
kww
KELLERWILLIAMS®

CARMEN ROA
REALTOR®

601.317.0122 Cell
601.977.9411 Office
carmenroa@kw.com

Each Office is Independently Owned and Operated

REALTOR®



MADISON COUNTY DEVELOPMENTS

★ DEVELOPMENT ADVERTISER

- | | | |
|-----------------------------|----------------------------------|---------------------------|
| 1. Autumn Crest | 11. Katherine Lake of Caroline | 21. Thornberry |
| 2. Bellemeade of Caroline | 12. Pinehurst II of Caroline | 22. West Lake ★ |
| 3. Canyon Ridge | 13. Reunion | 23. Whittington ★ |
| 4. Carlton Parke II | 14. Sawyer's Ridge | 24. Wild Oak of Oakfield |
| 5. Charlton Place | 15. Springwood | 25. Woodscape of Oakfield |
| 6. Expedition Point ★ | 16. Stone Lake | 26. Wright's Mill |
| 7. Fontanelle ★ | 17. The Heritage of Jacob's Farm | 27. Yandell Farms |
| 8. Glendale Farms | 18. The Shores | |
| 9. Glenwild | 19. The Town of Lost Rabbit | |
| 10. Heron's Bay of Caroline | 20. The Village at Madison ★ | |



DESIGN | CONSTRUCTION | LIGHTING | CONSULTATION



Creatively Tailored Just for YOU.

208 W. Jackson Street, Suite 200 | Ridgeland, MS

601-383-0597

LandscapeDesignStudio.net



1 AUTUMN CREST

Contact: Scott Shoemaker

P: 601-853-5060

Ridgeland, MS 39157

sales@shoemakerhomes.com

www.shoemakerhomes.com

Directions: From I-55, take the Gluckstadt Exit (Exit 112.) Turn west back over the interstate. Proceed two miles to Catlett Road. Turn right (North.) Proceed approximately one mile. Turn left onto Autumn Drive. (Currently, there are no street signs or entrance signs.) Turn to the right before the FALLS CROSSING entrance.

2 BELLEMEADE OF CAROLINE

Contact: Todd Seymour

P: 601-605-4458

607 Highland Colony Parkway, #200

Ridgeland, MS 39157

Lots Available: 69

Lot Pricing: \$69,000-\$75,000

Development Amenities: Homeowner's

Association amenities include 3 swimming pools, tennis courts, fishing lake, boat ramps, clubhouse, access to member golf course and neighborhood restaurant

Directions: From I-55 to Madison, exit west on Highway 463, go north on Bozeman Road and Colony Crossing. Take left on Stribling to the entrance of Caroline at Belle House.

3 CANYON RIDGE

Contact: Houston Primos

P: 601-906-9102

Contact: Houston Primos, Jr.

P: 601-906-4467

201 E. Layfair Drive, Suite 205

Flowood, MS 39232

Houstonprimosrealestate.com

Primoslandandhomes.com

Directions: Located off Mt. Leopard Road.

4 CARLTON PARKE II

(Ridgeland)

Contact: JonMark Jordan

P: 601-853-1800

607 Highland Colony Parkway, Suite 200

Ridgeland, MS 39157

jordan@porticoms.com

PorticoMS.com

Total Lots: 36

Lots Available: 11

Home Pricing: \$600,000+

Development Amenities: Private gate access off Richardson and pool, clubhouse, tennis court

Directions: Steed Road ½ mile from Highland Colony Parkway.



5 to 9 Acre Lots
Heavily Wooded
Private, Gated Community
Underground Power & Utilities

Lot	Acreage
Lot 1	5.0 AC
Lot 2	5.0 AC
Lot 3	9.23 AC
Lot 4	8.07 AC
Lot 5	9.13 AC
Lot 6	8.98 AC
Lot 7	7.65 AC
Lot 8	5.00 AC
Lot 9	7.69 AC
Lot 10	5.00 AC
Lot 11	8.34 AC
Lot 12	5.19 AC

Located off Mount Leopard Rd. - Madison County

A Houston Primos Development

Houston Primos
 601.906.9102

Houston Primos, Jr.
 601.906.4467

5 CHARLTON PLACE

Contact: Katie & Stuart Warren
P: 601-906-5956, 601-672-6808
P.O. Box 383
Madison, MS 39130
Kw12683@yahoo.com
Charlton.ms

Total Lots: 80

Development Amenities: Gates, acreage lots, 2 lakes, 1 is 58 acres the other is 128 acres

Directions: Located off Hwy 22.

6 EXPEDITION POINT ★

Contact: Jessie Haley
P: 601-910-9010, 601-559-5354
Jessie@HaleyProperties.com

Directions: Off Hwy 43 near Natchez Trace Parkway.

7 FONTANELLE ★ (Madison)

Contact: Dan Ambrosino, Parkway Development
P: 601-899-8621, 601-540-7427
Danielambrosino47@gmail.com

Lots Available: 19

Lot Pricing: \$75,500

Development Amenities: Community clubhouse, pool, and lake

Directions: I-55 to Madison, exit east on Highway 463. Take left on Galleria Parkway, turn right in one mile onto Fontanelle Boulevard.



The best memories are made in the comfort of our home. At First Bank, we support the homes where families are built. See how we can help at **FirstBankMs.com**

Contact our lending department today!

Call **Bill Bethany - (601) 982-1750**
NMLS #701437

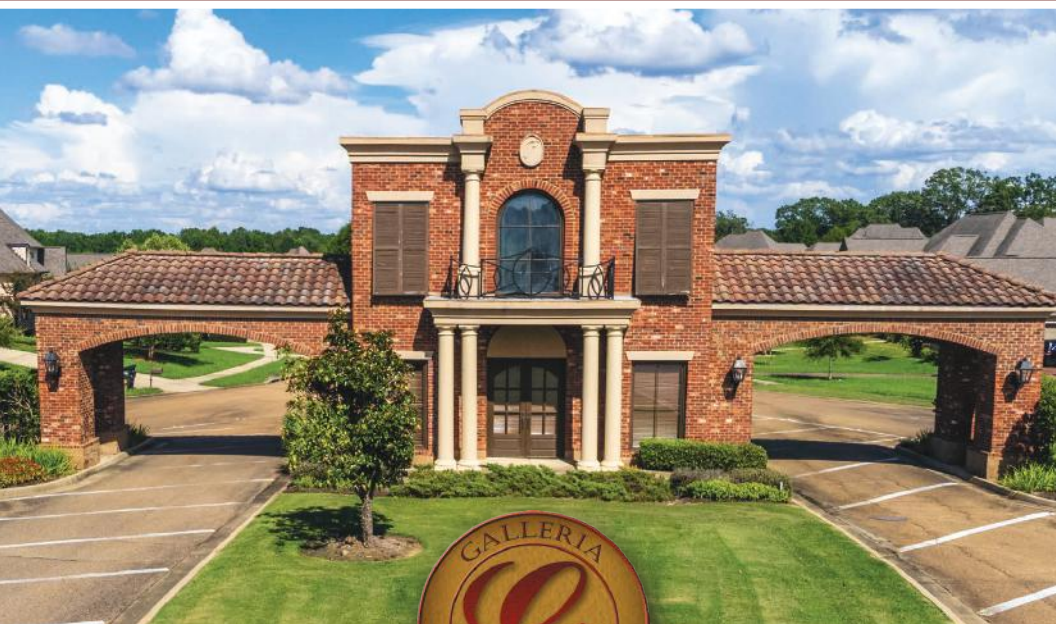
Call **Andrew Johnson - (601) 726-3383**
NMLS #500393

All loans are subject to credit approval.
Additional terms and conditions may apply.

First Bank

FONTANELLE AT GALLERIA

— *Where The Living Is Best* —



Convenient Madison Location
Community Clubhouse & Pool
Madison City Limit School District



Available Now
Phase 2C - 19 Lots - 1/3 acre \pm
Coming Soon - Phase 2D



Directions: I-55 to Madison, exit east on Hwy 463, left on Galleria Pkwy., in 1 mile turn right onto Fontanelle Blvd.

For information contact **Dan Ambrosino / Parkway Development**
601.899.8621 / 601.540.7427

8 GLENDALE FARMS

Contact: JonMark Jordan

P: 601-853-1800

607 Highland Colony Parkway, Suite 200

Ridgeland, MS 39157

jordan@porticoms.com

PorticoMS.com

Lots Available: Phase 1 - 85

Home Pricing: \$300,000 - \$400,000

Directions: On Yandell Road, 1.5 miles from Highway 51.

9 GLENWILD

Contact: Arthur Noble

P: 601-953-6987

3258 Hwy 22

Madison, MS 39110

nre@arthurnobleproperties.com

Total Lots: 220

Home Pricing: \$275,000 - \$350,000

Development Amenities: Swimming pool, playground

Directions: Highway 51 to Yandell Road.

10 HERON'S BAY OF CAROLINE

Contact: Todd Seymour

P: 601-605-4458

607 Highland Colony Parkway, #200

Ridgeland, MS 39157

Lots Available: 18

Lot Pricing: \$65,000-\$150,000

Development Amenities: Homeowner's Association amenities include 3 swimming pools, tennis courts, fishing lake, boat ramps, clubhouse, access to member golf course and neighborhood restaurant

Directions: I-55 to Madison, exit west on Highway 463, north at Bozeman Road and Colony Crossing, left on Stribling to entrance to Caroline at Belle House, right on Caroline Crossing, left at Villages of Hampton.

11 KATHERINE LAKE OF CAROLINE

Contact: John Michael Rainey

P: 601-613-5242

Jm@tailoredsouthhomes.com

Lots Available: 14

Lot Pricing: Interior Lots - \$70,000

Water Lots - \$110,000

Development Amenities: Pools, lake, walking trails, playground

Directions: Take the main Caroline entrance, go right at the roundabout onto Bellevue, then left at wooden bridge. Follow until you come to your first turn on your left. Go to the gate that will open to Katherine Lake.



Bank Wisely.SM

BANK OF FOREST

**Let us help select
the loan that best
fits YOUR needs.**

We offer construction loans to builders and individuals. We also offer Conventional, FHA, Rural Housing and VA loans. In addition, we offer programs especially for first time homebuyers.

Call us TODAY!



Damon Williams

601.992.7119

Bank of Forest
Senior Vice President
NMLS #533491
bkforest.com



Kasey Finklea

601.919.0066

Diversified Mortgage
Corporation, President
NMLS #69607
diversifiedmortcorp.com

1698 Old Fannin Road
Flowood, MS 39232



Member
FDIC

12 PINEHURST II OF CAROLINE

Contact: Todd Seymour

P: 601-605-4458

607 Highland Colony Parkway, #200
Ridgeland, MS 39157

Lots Available: 69

Lot Pricing: \$59,000

Development Amenities: Homeowner's

Association amenities include 3 swimming pools, tennis courts, fishing lake, boat ramps, clubhouse, access to member golf course and neighborhood restaurant

Directions: I-55 to Madison, exit west on Highway 463, north at Bozeman Road and Colony Crossing, left on Stribling to entrance to Caroline at Belle House, right on Caroline Crossing.

13 REUNION

(Madison)

Contact: Laura Kestenbaum

P: 601-605-9797, ext. 2

105 Reunion Boulevard

Madison, MS 39110

laura@reunionms.com

Total Lots: 1,126

Lots Available: 89

Lot Pricing: \$136,000-\$800,000

Home Pricing: \$450,000 - \$4,000,000+

Development Amenities: Clubhouse, golf, tennis, dining, fitness, recreational and fishing lakes, sandy beaches, walking trails, two community pools, multi-purpose lawn areas, children's playground, covered marina, community event pavilion, gated entrances

Directions: I-55 to Madison exit 463, east on Highway 463 - approximately 7 miles on right.

14 SAWYER'S RIDGE

Contact: Brian Sartain
P: 601-720-0376
Briansartain60@gmail.com

Total Lots: 7
Lots Available: 4
Lot Pricing: \$145,000+
Size Minimums: 2,800 SF
Development Amenities: Acreage lots, wooded, Germantown School District

Directions: Catlett Road, right on Quail Ridge Drive, left on Hunter's Cove.

15 SPRINGWOOD ★

(Flora)

Contact: JonMark Jordan
P: 601-853-1800
607 Highland Colony Parkway, Suite 200
Ridgeland, MS 39157
jordan@porticoms.com
PorticoMS.com

Total Lots: 21, 10-15 acre homesites
Development Amenities: 32 +/- acre private lake

Directions: Robinson Springs Road, 3 miles west of Highway 463.

16 STONE LAKE

(Madison)

Contact: Landmark Homes
P: 601-932-1972
P.O. Box 12004
Jackson, MS 39236
sales@lmhomes.net
stonelake.info

Total Lots: 53
Development Amenities: Lake, sidewalks

Directions: Highland Colony to Lake Castle, turn on Lake Castle, Stone Lake is on the right.

17 THE HERITAGE OF JACOB'S FARM

(Ridgeland)

Contact: Brad Williams
P: 601-714-1200, 601-259-1778
150 Fountains Boulevard, Suite A
Madison, MS 39110
Brad@selectedge.com
Heritageridgeland.com

Total Lots: 61
Development Amenities: Gated community, community garden, stocked pond, walking trail, picnic island, nearby Ross Barnett Reservoir

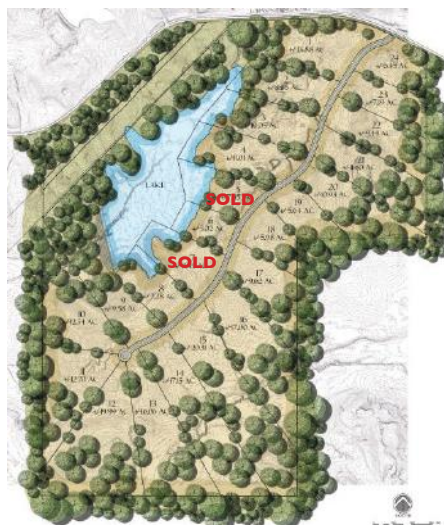
Directions: Located off Old Canton Road in Ridgeland.



Flora's Newest Development

Lots: 5-20 acres
Community Boat Ramp
2,500 SF Mins
Cspire Fiber Available

24 Large Acreage Homesites 31^{+/-} Acre Private Lake



Paul Hopper
601-942-5527 | 601-724-1435



HOPPER
Real Estate Leaders

18 THE SHORES

Contact: Blake Cress

P: 601-427-9996

661 Sunnybrook Drive, Suite 120

Ridgeland, MS 39157

blake@cressrealty.com

Cresscre.com

Total Lots: 107

Lots Available: 12

Final phase opening soon with new waterfront lots!

Lot Pricing: \$55,000 - \$130,000

Home Pricing: \$400,000 - \$800,000

Development Amenities: Clubhouse, community pool, park, marina, pavilion, beach

Directions: From I-55, take Highway 22 and then go west 8 miles.

20 THE VILLAGE AT MADISON

(Madison)

Contact: Mark Castleberry

P: 662-244-7099

Mark@casprop.net

Villageatmadison.com

Contact: Jessie Haley

P: 601-910-9010, 601-559-5354

Jessie@HaleyProperties.com

Total Lots: 46

Development Amenities: Mixed use development within walking distance to restaurants and retail stores

Directions: Off Main Street in Madison, just past the historic Madison arch.

19 THE TOWN OF LOST RABBIT

Contact: Todd Carter

P: 601-927-7157

Tcarter567@aol.com

CedarstoneMS.com

Lots Available: 8

Lot Pricing: \$75,000 - \$110,000

Development Amenities: Pools, marina, sidewalks, walking trails, reservoir access and views

Directions: From Highway 51 in Madison, go east on Hoy Road until you enter Lost Rabbit.

21 THORNBERRY

Contact: Matt Jensen

P: 601-540-1123

P.O. Box 1274

Madison, MS 39130-1274

Mattdbj8@aol.com

Contact: Scott Gideon

P: 601-750-5111

P.O. Box 2447

Madison, MS 39130-2447

Gideon2270@gmail.com

Total Lots: 360

Lots Available: 50 (Phase 3)

Home Pricing: \$435,000-\$525,000

Development Amenities: future pool and cabana

Directions: Gluckstadt Road to right on Dewees Road. Thornberry is located on the left.

22 WESTLAKE ★

Contact: Matt Jensen
P: 601-540-1123
P.O. Box 1274
Madison, MS 39130-1274
Mattbj8@aol.com

Contact: Scott Gideon
P: 601-750-5111
P.O. Box 2447
Madison, MS 39130-2447
Gideon2270@gmail.com

Total Lots: 192
Lots Available: 50 (Phase 2 & 3)
Home Pricing: \$575,000 - \$1,000,000+
Development Amenities: 60-acre lake, future cabana & pool

Directions: Gluckstadt Road to right on Dewees Road. Westlake is located on the left.

23 WHITTINGTON ★

(Madison)

Contact: John and Amanda Polles
Polles Properties
P: 601-898-3364
654 Bellevue Drive
Madison, MS 39110
john@pollesproperties.com
amanda@pollesproperties.com
pollesproperties.com/whittington/

Lots Available: 16 (Phase 3)
Phase 4 - Available Spring 2024
Lot Pricing: \$80,000+
Development Amenities: Community pool, pavilion, sidewalks, private gated community, and large green spaces

Directions: I-55 to Main Street, Madison. North on Welch Farm Road to Locust Lane.



WHITTINGTON
MADISON, MISSISSIPPI

PHASE 3
LOTS NOW AVAILABLE

John Polles
601.941.7168
john@pollesproperties.com

PHASE 4
SPRING 2024
RESERVE YOUR LOT NOW

Amanda Polles
601.278.6871
amanda@pollesproperties.com

POLLES
PROPERTIES LLC

24 WILD OAK OF OAKFIELD

Contact: Blake Cress

P: 601-427-9996

661 Sunnybrook Drive, Suite 120

Ridgeland, MS 39157

blake@cressrealty.com

Cresscre.com

Lots Available: New phase opening Oct. 2023

Lot Pricing: \$65,000-\$67,000

Home Pricing: \$325,000 - \$375,000

Development Amenities: Pool, playground, park, and pavilion

Directions: Highway 51 to Yandell Road then right on Clarkdale Road and it's one mile on the left.

25 WOODSCAPE OF OAKFIELD

Contact: Blake Cress

P: 601-427-9996

661 Sunnybrook Drive, Suite 120

Ridgeland, MS 39157

blake@cressrealty.com

Cresscre.com

Total Lots: 207

Lots Available: Fall 2023

Home Pricing: \$285,000+

Development Amenities: Community pool, pavilion, playground, recreational area, and sidewalks

Directions: Take Highway 51 to Yandell Road, go east one mile to Clarkdell Road. Go south on Clarkdell Road for one mile. Woodscape is on your left.

26 WRIGHT'S MILL

(Madison)

Contact: Blake Cress

P: 601-427-9996

661 Sunnybrook Drive, Suite 120

Ridgeland, MS 39157

blake@cressrealty.com

Cresscre.com

Total Lots: 248

Lots Available: 3 (Final Phase)

Lot Pricing: \$45,000 - \$70,000

Home Pricing: \$328,000 - \$650,000

Development Amenities: Clubhouse, community pool, pavilion, playground, sidewalks, and walking trails

Directions: Rice Road just north of Natchez Trace Parkway.

27 YANDELL FARMS

Contact: Chad Robinson

P: 601-983-2320

keystonerealtycorp@yahoo.com

keystonerealtycorp.com

Directions: Yandell Road past Deerfield on the left and the subdivision will be on the right.

OLD SOUTH



Brick & Supply Co.

A Mississippi Family Company Since 1982

Specializing in Rare Old Brick & Brick Matching

Brick • Architectural Block • Natural & Cultured Stone • Indoor/ Outdoor Fireplace

601-366-8463 | www.OldSouthBrickandSupply.com

Get \$1,000 Lender Credit

to use toward closing costs
when you use a **Certified
Professional Builder.**

Let BankFirst help with closing costs.

Chris Smith

COMMERCIAL LENDER

(769) 234-5678 | csmith@bankfirstfs.com
NMLS# 1113539

BANKFIRST

Lending

bankfirst.mortgage | NMLS# 454063 |  



(Located on the corner of
Pinehaven Dr. & Arrow Dr.)



Starting at 1600 sf mins

CLINTON

AWARD-WINNING SCHOOLS
HISTORIC DOWNTOWN
WALKABLE ENTERTAINMENT
& SHOPPING

KIRKLAND DEVELOPMENT, INC.

Lee Irwin,
Godfrey Realty Group,
601-326-3333, 601-259-5544

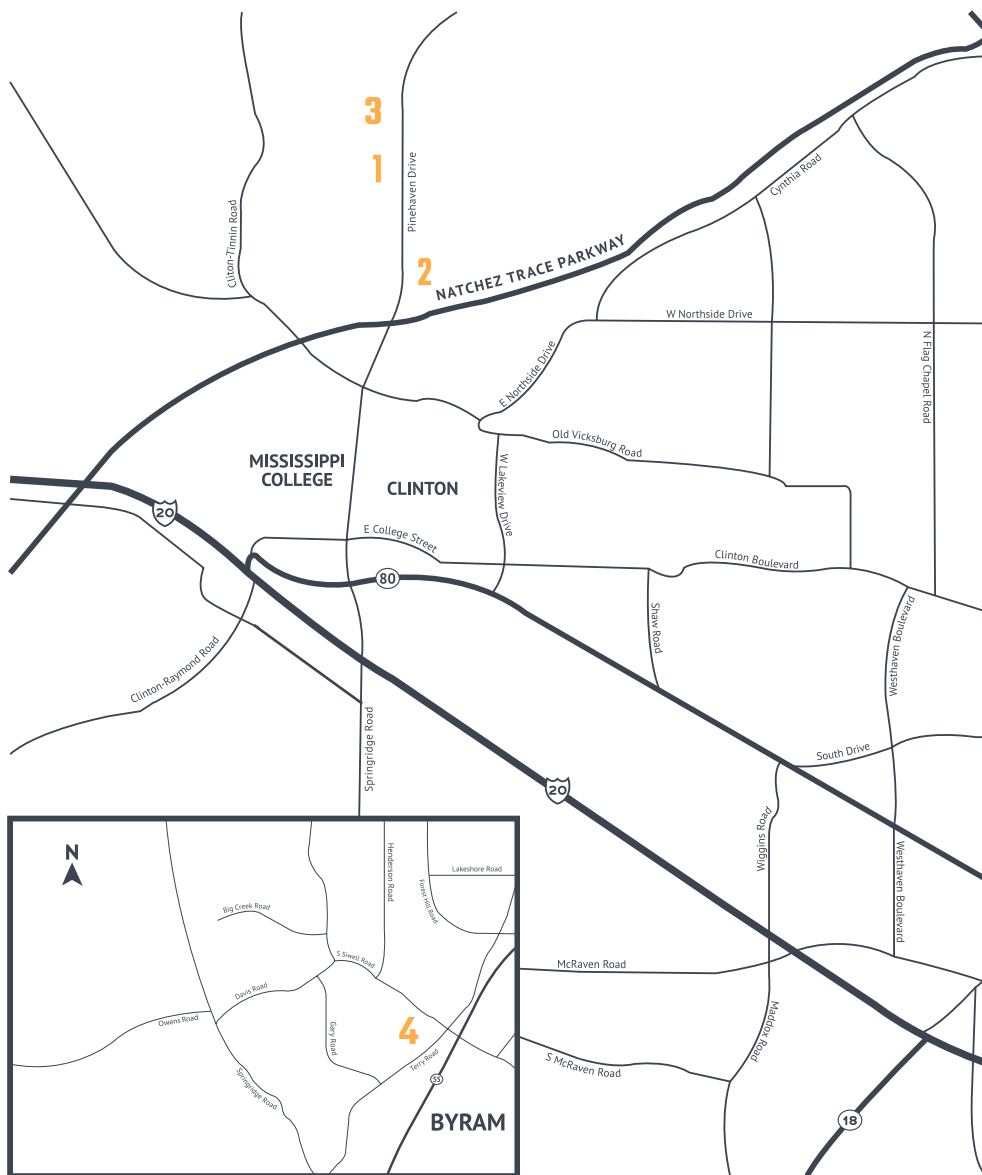
Leah Sandidge,
Godfrey Realty Group,
601-540-6086, 601-925-9905

HORSESHOE BEND

Starting at 1600 sf mins

(Natchez Trace to Pinehaven Dr.)





HINDS COUNTY DEVELOPMENTS

- 1. Horseshoe Bend ★
- 2. Trace Pointe ★
- 3. Windsor Plantation
- 4. Cedars of Byram Estates

★ DEVELOPMENT ADVERTISER



Business partners. Community leaders.

Commercial Real Estate & Construction Loans

At BankPlus, every decision we make is driven by community. We've done it that way for over 100 years. We're here for our local businesses. Your success drives growth for all of us. Learn more at bankplus.net

BankPlus

© Copyright 2023 BankPlus.
Member FDIC.



We've Been Around the Block

Building Strong Foundations Since 1927



601-353-8366
www.mmcmaterials.com

1 HORSESHOE BEND ★

(Clinton)

Contact: Bruce Kirkland, CPB
P: 601-982-7381
602 Steed Road
Ridgeland, MS 39157

Total Lots: 350
Lot Pricing: \$65,000
Home Pricing: \$300,000+
Development Amenities: Award winning schools, historic downtown, walkable entertainment, and shopping

Directions: Natchez Trace to Pinehaven Drive.

2 TRACE POINTE ★

(Clinton)

Contact: Bruce Kirkland, CPB
P: 601-982-7381
602 Steed Road
Ridgeland, MS 39157

Total Lots: 22
Lot Pricing: \$65,000
Development Amenities: Award winning schools, historic downtown, walkable entertainment and shopping

Directions: Natchez Trace to Pinehaven Drive.

3 WINDSOR PLANTATION

(Clinton)

Bruce Kirkland, CPB
P: 601-982-7381
602 Steed Road
Ridgeland, MS 39157

Total Lots: 150
Lot Pricing: \$65,000
Home Pricing: \$300,000+
Development Amenities: Pool, wooded lots, waterfront lots, and community green spaces

Directions: I-20 to Springridge Road exit, take Springridge Road north which turns into Pinehaven near the Natchez Trace. Windsor Plantation will be on your left.

4 CEDARS OF BYRAM ESTATES

(Byram)

Contact: Chad Robinson
P: 601-983-2320
keystonerealtycorp@yahoo.com
keystonerealtycorp.com

Lots Available: 350
Home Pricing: \$350,000+

Directions: Take Highway 55 south to Byram, turn right onto Siwell Road. Take a left at Terry Road, towards Terry. Go 2.7 miles, subdivision will be on the right. Turn on Fairway Avenue and go to the back of the subdivision.

BLANCO

BRING YOUR VISION TO US

The experts at Ferguson Bath, Kitchen & Lighting Gallery are here to help create a home that's as extraordinary as you are.

Any project, any style, any dream—bring your inspiration to Ferguson Bath, Kitchen & Lighting Gallery. Visit build.com/ferguson to schedule your personalized showroom experience today.

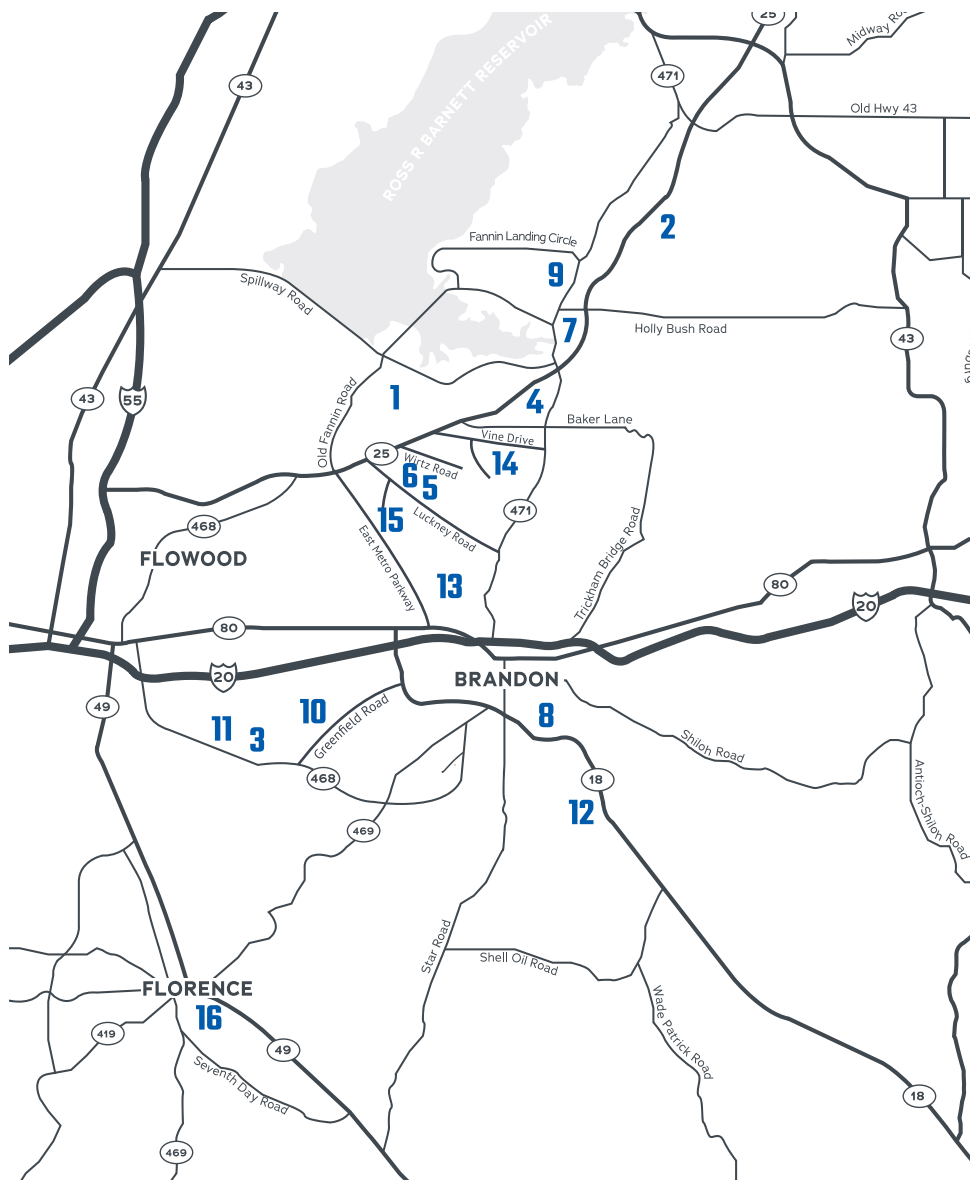
YOUR LOCAL SHOWROOM:
JACKSON

NO LICENSE?
NO
THANKS.

Is your contractor's work too hot to handle? Always ask to see their license and review their credentials before they begin. A bit of research now can help you avoid headaches, costly errors, and building complications later.



MSBOC.US | (800) 880-6161



RANKIN COUNTY DEVELOPMENTS

★ DEVELOPMENT ADVERTISER

- | | | |
|---------------------|--------------------------|-----------------|
| 1. Bristol Crossing | 8. Long Leaf | 15. WaterPointe |
| 2. Fallen Oak | 9. Northshore Landing | 16. Waverly ★ |
| 3. Jasmine Cove | 10. Patrick Farms | |
| 4. Kensington★ | 11. Silver Ridge | |
| 5. Indian Creek | 12. Stone Bridge | |
| 6. Les Maisons | 13. Tower Ridge | |
| 7. Liberté | 14. Vintner's Crossing ★ | |



**DOORS, WINDOWS, MOULDINGS & ALL
YOUR CUSTOM ARCHITECTURAL NEEDS**



HAMM

**CONTRACTORS
MILLWORK**



An Authorized Dealer

110 Jetport Drive • Pearl, MS 39208

Hours: Monday – Thursday 7am to 5pm • Friday 7am to 12pm

Follow us on Facebook, Houzz & Pinterest for ideas and inspiration

CONTRACTORMILLWORK.NET | 601-932-8326

1 BRISTOL CROSSING

(Flowood)

Contact: Brad Burleson, UList Realty

P: 601-832-2020

1093 Old Fannin Road

Brandon, MS 39047

brad@Ulistms.com

ulistms.com

Lots Available: 90 (Phase 1, Plus acreage lots available)

Size Minimums: 2,000 SF

Development Amenities: Neighborhood common area, cabana, kids' playground

Directions: Turn left onto Hugh Ward Parkway then left on Manship.

2 FALLEN OAK

Contact: Victoria Prowant

Southern Homes Real Estate

P: 601-GET-HOME

C: 601-750-7151

P.O. Box 14246

Jackson, MS 39236

victoriaprowant@yahoo.com

victoriaprowant.com

Total Lots: 82

Lots Available: 16

Lot Pricing: \$85,000 - \$105,000

Home Pricing: \$400,000 - \$650,000

Development Amenities: 2-4 acre lots, pool, clubhouse in Phase 3

Directions: Hwy 25 North, just north of Holly Bush Road on the right.

3 JASMINE COVE

Contact: Brad Burleson, UList Realty

P: 601-832-2020

1093 Old Fannin Road

Brandon, MS 39047

brad@Ulistms.com

ulistms.com

Lots Available: 56

Size Minimums: 1,800 SF

Directions: Highway 18 to Highway 468. Go about two miles on the left.

4 KENSINGTON ★

Contact: Jennifer Murray,

Blue South Real Estate

P: 601-951-1156

jmurraysellshomes@gmail.com

Lots Available: 40

Home Pricing: \$360,000+

Development Amenities: Gated community with pool, clubhouse, and pond

Directions: Take Highway 25 to Marshall Road. Gate for neighborhood is on the right.

5 INDIAN CREEK

(Flowood)

Contact: Robert Blackmon

P: 601-932-8630

201 E. Layfair Drive, Suite 205

Flowood, MS 39232

R_blackmon@ymail.com

Indiancreekhomes.org

Total Lots: 90

Development Amenities: Lake, green space, community pavilion, playground, architectural covenants

Directions: From Jackson, take Lakeland Drive east and turn right at Luckney Road just past Dogwood Festival. At stop sign, turn right onto Cooper Road and travel .8 miles and Indian Creek will be on your left behind Dogwood Place.

6 LES MAISONS

(Flowood)

Contact: Victoria Prowant

Southern Homes Real Estate

P: 601-GET-HOME

C: 601-750-7151

P.O. Box 14246

Jackson, MS 39236

victoriaprowant@yahoo.com

victoriaprowant.com

Directions: Conveniently located minutes from Dogwood Festival.



PHASE IV - 40+ HOMES Starting in the upper \$300s

Located off Hwy 471 in Flowood.

Community Pool/Clubhouse



Jennifer Murray,
Managing Broker

601-951-1156 | 601-398-2377
jmurraysellshomes@gmail.com

Blue SOUTH
REAL ESTATE GROUP



Step-By-Step Home Loan Help

Whether you are buying your first home, building your dream house, or looking to refinance the one you own, we'll provide the knowledge and guidance every step of the way. You don't have to walk alone. Our mortgage professionals can help find the perfect loan product for your needs.

Need home loan help?

Visit us online at CadenceBank.com/Mortgage to get prequalified, or contact a Cadence Loan Officer to learn more.



CADENCE
Bank

CadenceBank.com/Mortgage



© 2022 Cadence Bank. All Rights Reserved. Member FDIC. Equal Housing Lender. NMLS # 410279
Mortgage loans are subject to approval. Interest rates are subject to change without notice and are dependent on credit score. Certain conditions apply. This is not a commitment to lend or rate guarantee.



Make the **SmartChoice** with Natural Gas.

With rebates up to \$600, high-efficiency natural gas appliances are a smart choice for fueling our energy future.

Natural Gas Appliance (Efficiency qualifications apply)	Rebate Amount
High-Efficiency Furnace	Up to \$600
Tankless Water Heater	Up to \$350
Tank Water Heater	\$100
Clothes Dryer	\$100
Smart Thermostat	\$100

Atmos Energy is committed to providing solutions to help our Mississippi customers save money, conserve energy, and lower carbon emissions.

Visit [Atmos Energy.com/MSrebates](https://www.atmosenergy.com/MSrebates)
or call 877.616.6276



7 LIBERTÉ

(Flowood)

Contact: Victoria Prowant

Southern Homes Real Estate

P: 601-GET-HOME

C: 601-750-7151

P.O. Box 14246

Jackson, MS 39236

victoriaprowant@yahoo.com

victoriaprowant.com

liberteliving.com

Total Lots: 26 - 4 units per lot (quadplexes)

Home Pricing: \$329,900+

Development Amenities: Community pool, clubhouse, gated community, walking trails, and gardening area

Directions: Lakeland Drive/Highway 25 past Pinelake Church immediately across from BJ Tile.

9 NORTHSHORE LANDING

Contact: Victoria Prowant

Southern Homes Real Estate

P: 601-GET-HOME

C: 601-750-7151

P.O. Box 14246

Jackson, MS 39236

victoriaprowant@yahoo.com

victoriaprowant.com

Development Amenities: Pool, clubhouse, playground, multi-sport court

Directions: Cross Spillway or from Spillway/Old Fannin Road, travel on Northshore Boulevard, cross the causeway and go straight. Northshore Landing will be on your left.

8 LONG LEAF

(Brandon)

Contact: Brad Burleson, UList Realty

P: 601-832-2020

1093 Old Fannin Road

Brandon, MS 39047

brad@Ulistms.com

ulistms.com

Lots Available: 5

Size Minimums: 1,800 SF

Directions: Take I-20 East to Highway 80 Brandon exit, take right on College Street. Take a left on Sunset to Busick Wells Road and take a right on Busick Wells Road to Long Leaf on the right.

10 PATRICK FARMS

(Pearl)

Contact: Brad Burleson, UList Realty

P: 601-832-2020

1093 Old Fannin Road

Brandon, MS 39047

brad@Ulistms.com

ulistms.com

Lots Available: 60

Size Minimums: 1,800 SF

Development Amenities: Community pool and golf course

Directions: I-20 East to Crossgates exit. Right on Crossgates to Greenfield Road. Turn right on Greenfield. Patrick Farms entrance is on the left.

11 SILVER RIDGE

(Pearl)

Contact: Brad Burleson, UList Realty

P: 601-832-2020

1093 Old Fannin Road

Brandon, MS 39047

brad@Ulistms.com

ulistms.com

Lots Available: 50

Size Minimums: 1,500 SF

Directions: I-20 to Highway 468 in Pearl. The entrance is on the left.

12 STONEBRIDGE

(Brandon)

Contact: Brad Burleson, UList Realty

P: 601-832-2020

1093 Old Fannin Road

Brandon, MS 39047

brad@Ulistms.com

ulistms.com

Lots Available: 100

Size Minimums: 1,500 SF

Development Amenities: Pool, clubhouse, playground, fitness center, sidewalks

Directions: Take I-20 east from Jackson. Take the Brandon/Highway 18 exit and travel south. Stonegate is 5 miles on the right.



 **RENASANT**
MORTGAGE LENDING

Renasant Mortgage offers a Construction-to-Permanent product that allows your lot, construction, and mortgage financing covered in a single loan. Borrower-financed construction offers home-buyers the ability to customize the home of their dreams.

CONTACT ME TODAY

Alan Wall
Senior Mortgage Banker | NMLS #546646
(601) 668-7305
alan.wall@renasant.com
www.AlanWall-Renasant.com

2021 Renasant Bank. All loans or offers are subject to credit and underwriting approval. Other fees, conditions, and restrictions may apply. This is not a commitment to lend. Please contact a loan officer for details and questions. Bank NMLS# 402869 | 03252022-ACT-1

 Member
FDIC

13 TOWER RIDGE
(Pearl)

Contact: Brad Burleson, UList Realty
P: 601-832-2020
1093 Old Fannin Road
Brandon, MS 39047
brad@Ulistms.com
ulistms.com

Lots Available: 30
Size Minimums: 1,800 SF

Directions: Take Metro Parkway to Eldorado Road. Turn right at Old Brandon Road 4-way stop.

14 VINTNER'S CROSSING ★

Contact: Kevin Lofton
P: 601-540-6712
kevinlofton@att.net

Lots Available: 36
Size Minimums: 2,000 SF

Directions: Behind Northwest Rankin Middle School off Vine Drive.



Vintners Crossing

2000 SF
Minimums
36 Homesites
Rankin County



Located off Vine Dr. directly behind
Northwest Rankin Middle School

Kevin Lofton

601-540-6712 | kevinlofton@att.net



SILVER CREEK
CONSTRUCTION, LLC

15 WATERPOINTE

(Flowood)

Contact: Jessie Haley, Haley Properties
P: 601-910-9010, 601-559-5354
Jessie@HaleyProperties.com

Total Lots: 184 plus 31 Townhomes
Development Amenities: Traditional neighborhood development with town center, walkable to dining, shopping and entertainment, front porch lifestyle, resort styled pool, 34-acre lake, parks

Directions: From Lakeland Drive onto E. Metro Parkway, turn left into Waterpointe.

16 WAVERLY ★

(Florence)

Contact: Tim Weaver, Weaver Developments
P: 601-853-3344
Weaverdevelopments.com

Lots Available: 110
Home Pricing: \$350,000+
Development Amenities: Neighborhood pool and cabana

Directions: Located off Eagle Post Road, 4/10 miles off Highway 49 in Florence.



A-1
SINCE 1966

KENDRICK
FENCE COMPANY

THINK UNLIMITED

RESIDENTIAL • COMMERCIAL • GATE AUTOMATION

WE OFFER THE FULL SPECTRUM OF SERVICES
TO HELP MEET YOUR FENCING NEEDS



601.939.1446

WWW.A1KENDRICK.COM

WAVERLY

a perfect place to call home
Florence, MS



Homes starting at \$350,000
Approximately 2025-2100 SqFt
3 & 4 Bedroom Homes Available
Featuring Home Offices
Florence School District
Neighborhood Pool & Cabana

Marketed by:

Weaver
& Associate
REAL ESTATE

Homes built by:



Developed by:

**WeaverDevelopments**

Call (601) 853-3344 for more information
www.weaverdevelopments.com



YOU

**Can Get
More Splash
for Your Cash**

Natural gas is the economical choice for water heating — making it perfect for bath time!

Natural gas is about half the cost of electric and recovers faster, so you have more hot water when you need it most!

Learn more at
CenterPointEnergy.com/NaturalGasBenefits.



©2021 CenterPoint Energy 210805-15

HOME BUILDERS ASSOCIATION OF JACKSON

TO FIND A BUILDER IN THE METRO JACKSON
AREA VISIT HBAJACKSON.COM

FIND US ON FACEBOOK!



HOME BUILDERS ASSOCIATION OF JACKSON
PARADE OF HOMES JACKSON
THE HOMESHOW JACKSON



*“We build success
for our clients on a
foundation of trust,
expertise and exceptional
client service.”*

BRYAN NESBIT

*Senior Managing Director,
Residential Construction Lending*

bnesbit@firstcommercialbk.com
601-709-2297 NMLS #2313977





CANTON RICHLAND

CANTON: 601-932-0284

RICHLAND: 601-932-0284

84LUMBER.COM

RENOVA KNOWS ROOFING



RESIDENTIAL

COMMERCIAL

INSURANCE CLAIMS

601.647.3433 • RENOVAROOFFING.COM



RENOVA
ROOFING & CONSTRUCTION